

PAIRING YOUR EON 600 WITH THE CONNECT APP

STEP 1 - MASTER RESET

With the unit off;

- Press and hold both BOOT and EQ+ buttons.
- While holding turn the unit On.

Continue to hold until ALL LED's Start to flash.

The LED's will flash a total of 5 times, then the unit will power cycle.



Press the SYNC button To broadcast the Bluetooth address.

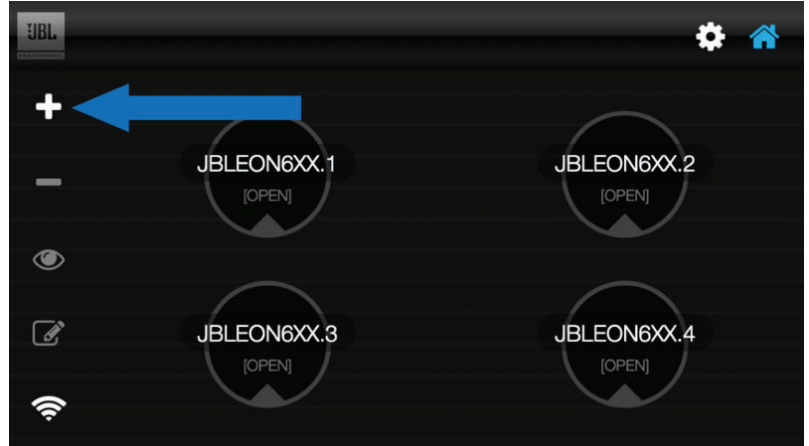


STEP 2 - EON CONNECT APP

On The EON Connect APP:

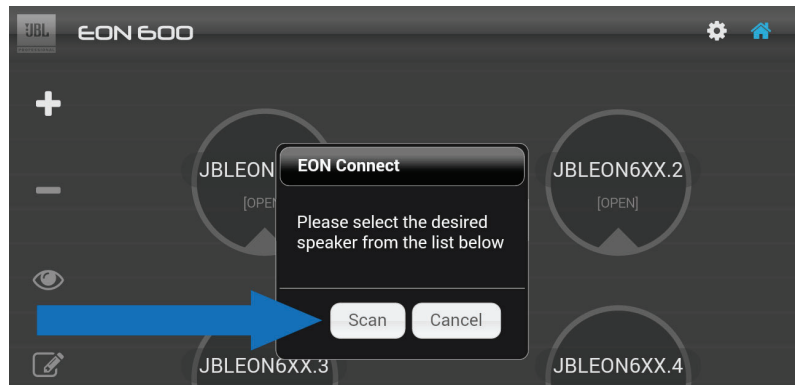
Press the + button to add a new speaker.

Notice all 4 circles are labeled [OPEN].

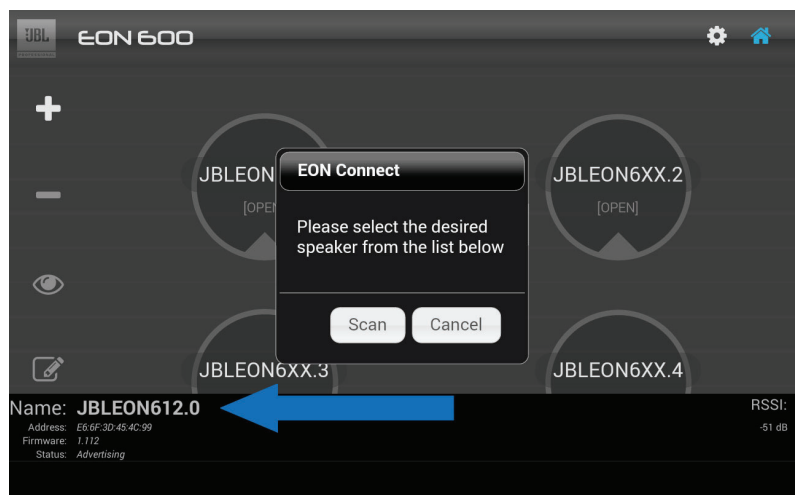


Android Setup

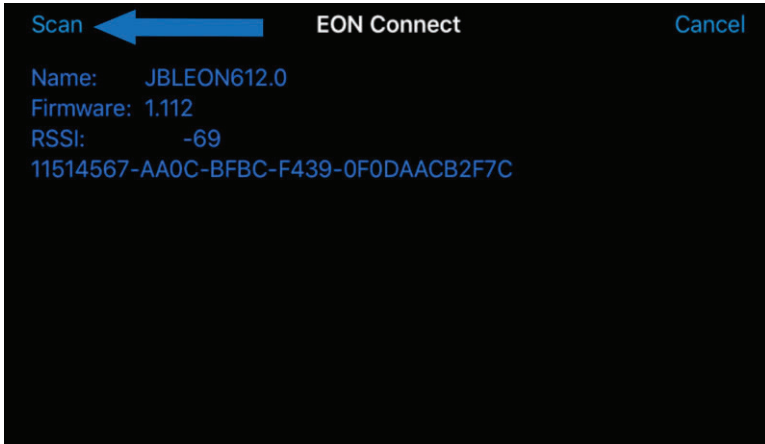
Press the Scan button to locate the EON



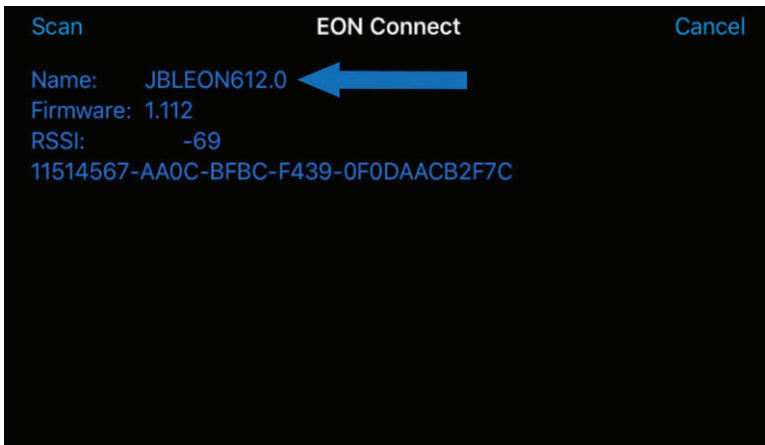
Select the discovered device
(EON612 shown)



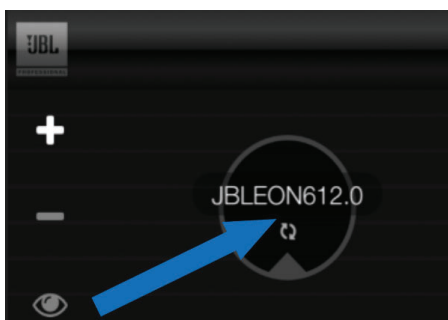
iOS Setup



Press the Scan button to locate the EON



Select the discovered device
(EON612 shown)



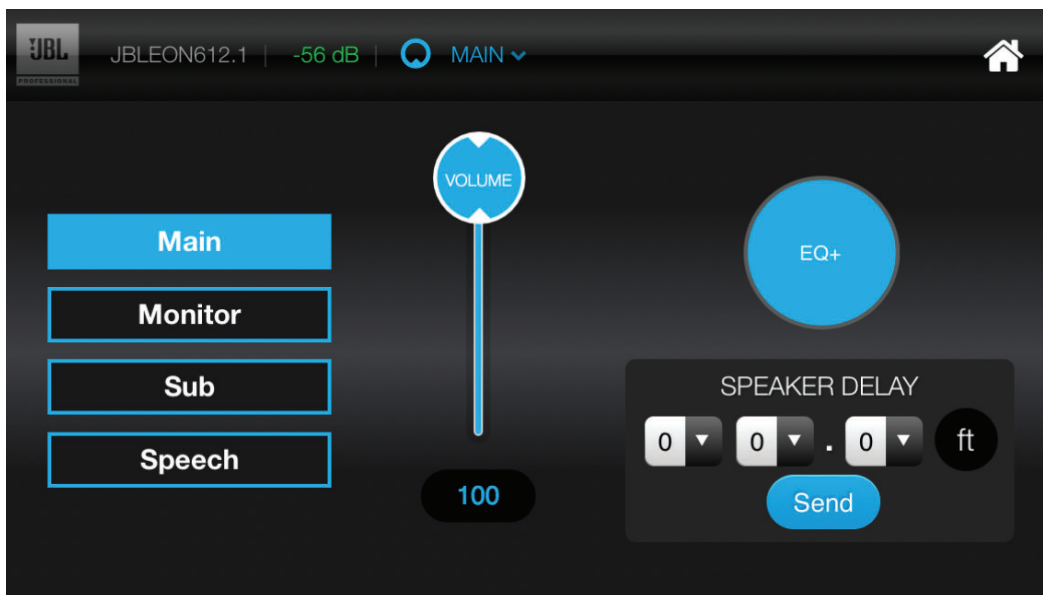
The App will sync the EON to the next available spot

The device will show Online when connected

Success !



Double tap on the Online Speaker to control its settings.



About HARMAN Professional Solutions

HARMAN Professional Solutions is the world's largest professional audio, video, lighting, and control products and systems company. Our brands comprise AKG Acoustics®, AMX®, BSS Audio®, Crown International®, dbx Professional®, DigiTech®, JBL Professional®, Lexicon Pro®, Martin®, Soundcraft® and Studer®. These best-in-class products are designed, manufactured and delivered to a variety of customers in markets including tour, cinema and retail as well as corporate, government, education, large venue and hospitality. For scalable, high-impact communication and entertainment systems, HARMAN Professional Solutions is your single point of contact. www.harmanpro.com

Contact us at hprotechsupportusa@harman.com

Technical Customer Support

©2016 HARMAN. All rights reserved. Specifications subject to change.