



### Firmware in BSS Soundweb London Devices

It is important to determine the firmware version when replacing a Soundweb London device in a working system. Changing the firmware in a device will cause the devices to mute and stop running its Configuration. If you load the previous version of firmware back to the device, it will start running its Configuration without the Configuration being uploaded again. If you change the firmware in a device it will need to be reloaded with the Configuration from the matching version of HiQnet software.

It is also important to determine the version of the software application which was used to configure and load the Configuration into the devices. The device firmware version will dictate the version of software that should be used to connect to the system.

It is not possible to connect to a system with a version of software which is different from the version used to configure the system. If the version of software installed on the PC is not the same then the firmware in the device may need to be updated and the Configurations will need to be loaded.

### HiQnet Audio Architect

Each version of Audio Architect includes firmware files for all Soundweb London devices. The firmware files will be specific a number of versions of Audio Architect. The table in the following guide lists the firmware version associated with each release: <https://help.harmanpro.com/bss-soundweb-london-host-and-dante-firmware-in-hiqnet-audio-architect>

The following guide can be used to identify the version of Audio Architect that was last used to save a Venue file: [Determining the version of HiQnet Audio Architect which was used to save a Venue file](#)

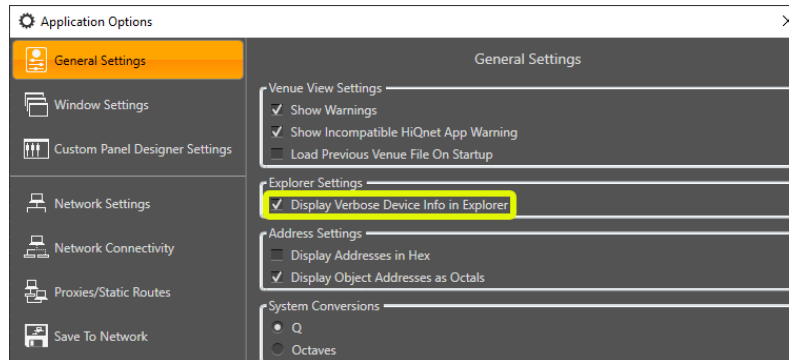
All versions of HiQnet Audio Architect are available to download from the Audio Architect web site here: [https://audioarchitect.harmanpro.com/en-US/software/hiqnet-audio-architect-v2-45-2-windows-7-spl-8-1-10#previous\\_versions](https://audioarchitect.harmanpro.com/en-US/software/hiqnet-audio-architect-v2-45-2-windows-7-spl-8-1-10#previous_versions)

# Identifying the Firmware Version in a BSS Soundweb London Device



## Displaying Device Firmware Version in Audio Architect

Ensure that the Soundweb London device is connected to the network and discovered in Audio Architect. Check that Application Options are configured correctly. The following settings must be enabled: General Settings / Explorer Settings / Display Verbose Device Info in Explorer



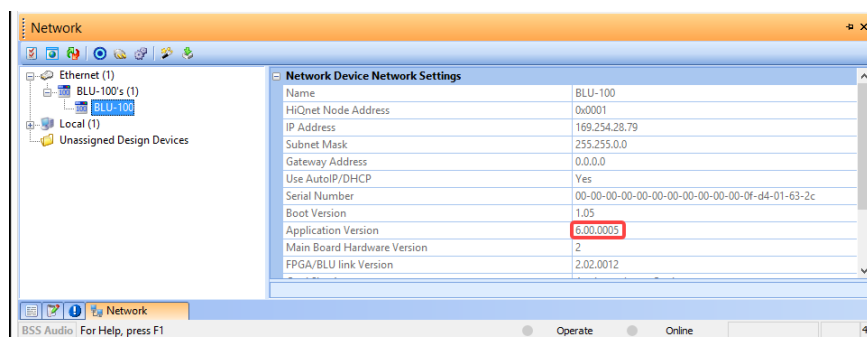
Expand the device in the Venue Explorer window. The firmware version will be displayed in the list of details. Most Soundweb London firmware versions included in Audio Architect will start with start with the number: 86

The firmware version will also be displayed on the front panel if the device is fitted with an LCD.



## Displaying Device Firmware Versions in London Architect

Ensure that Soundweb London device is connected to the network and discovered in London Architect. Open the Network window. Go to the View menu then select: Network. Locate the Ethernet folder then left click to select it. The firmware version will be displayed in the Network Settings window in the field: Application Version. The version displayed in the example below relates to London Architect v6.00.R5.



# Identifying the Firmware Version in a BSS Soundweb London Device



The firmware version will also be displayed on the front panel if the device is fitted with an LCD.

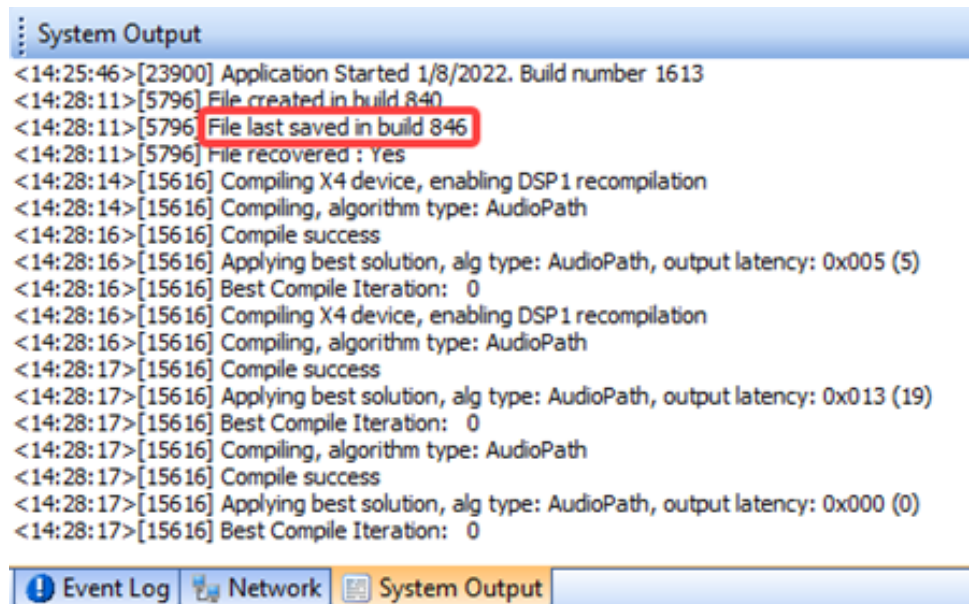


## HiQnet London Architect

Each version of London Architect includes firmware files for all Soundweb London devices. The firmware files will be specific to that version of London Architect.

Please follow the steps below to identify the version of London Architect that was last used to save a design file.

- Open the file in London Architect
- Under View in the Main menu at the top, select: System Output



The build number will be displayed in the following line: File last saved in build xxx

# Identifying the Firmware Version in a BSS Soundweb London Device



The table below lists the software Build Number, software version and associated firmware version. All versions of HiQnet London Architect are available to download from the BSS Audio web site here:

[https://bssaudio.com/en-US/software/hiqnet-london-architect-v6-00-r5-windows#previous\\_versions](https://bssaudio.com/en-US/software/hiqnet-london-architect-v6-00-r5-windows#previous_versions)

| Build Number | London Architect Version |
|--------------|--------------------------|
| 462          | 1.00                     |
| 664          | 1.1                      |
| 684          | 1.12                     |
| 684          | 1.12.R2                  |
| 713          | 1.14                     |
| 714          | 1.14.R2                  |
| 716          | 1.14.R2b                 |
| 716          | 1.14.R3                  |
| 784          | 2.00.R2                  |
| 785          | 2.00.R3                  |
| 786          | 2.00.R4                  |
| 801          | 2.02                     |
| 802          | 2.02.R2                  |
| 803          | 2.02.R3                  |
| 839          | 2.04                     |
| 840          | 2.04.R2                  |
| 841          | 2.04.R3                  |
| 846          | 2.04.R4                  |
| 876          | 2.06                     |
| 877          | 2.06.R2                  |
| 878          | 2.06.R3                  |
| 888          | 2.06.R4                  |
| 898          | 2.06.R5                  |
| 925          | 3.00                     |
| 934          | 3.00.R2                  |
| 944          | 3.00.R3                  |
| 951          | 3.00.R4                  |
| 955          | 3.00.R6                  |
| 959          | 3.00.R7                  |

| Build Number | London Architect Version |
|--------------|--------------------------|
| 985          | 3.02.R2                  |
| 990          | 3.02.R3                  |
| 1003         | 3.02.R4                  |
| 1011         | 3.04                     |
| 1051         | 3.06                     |
| 1055         | 3.06 R2                  |
| 1071         | 3.08                     |
| 1074         | 3.08 R2                  |
| 1075         | 3.08.R3                  |
| 1078         | 3.08.R4                  |
| 1117         | 3.10.R2                  |
| 1123         | 3.10.R3                  |
| 1124         | 3.10.R4                  |
| 1144         | 3.10.R5                  |
| 1145         | 3.10.R6                  |
| 1146         | 3.10.R7                  |
| 1147         | 3.10.R8                  |
| 1190         | 4.00                     |
| 1192         | 4.00.R2                  |
| 1324         | 5.00                     |
| 1327         | 5.00 R4                  |
| 1328         | 5.00 R5                  |
| 1330         | 5.02                     |
| 1601         | 6.00                     |
| 1602         | 6.00 R2                  |
| 1603         | 6.00 R3                  |
| 1612         | 6.00 R4                  |
| 1613         | 6.00 R5                  |
| 5019         | 6.02.R3                  |

## About HARMAN Professional Solutions

HARMAN Professional Solutions is the world's largest professional audio, video, lighting, and control products and systems company. Our brands comprise AKG Acoustics®, AMX®, BSS Audio®, Crown International®, dbx Professional®, JBL Professional®, Lexicon Pro®, Martin®, and Soundcraft®. These best-in-class products are designed, manufactured and delivered to a variety of customers in markets including tour, cinema and retail as well as corporate, government, education, large venue and hospitality. For scalable, high-impact communication and entertainment systems, HARMAN Professional Solutions is your single point of contact. [www.harman.com](http://www.harman.com)

