

v1.0

## Monitoring and Logging Signal Level in Soundweb London

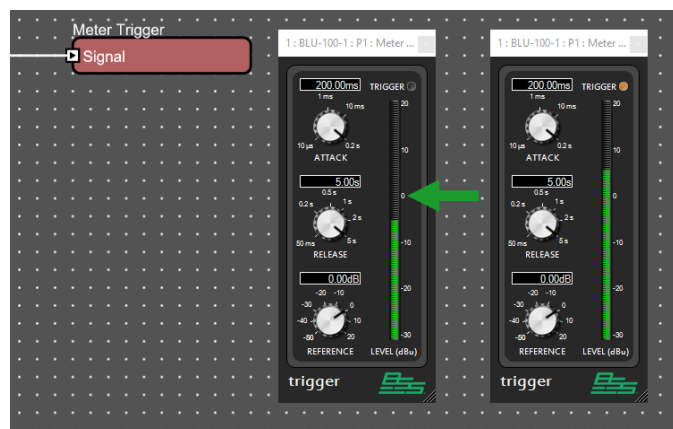
23-Feb-23

The level of a signal in a Soundweb London configuration can be monitored using the two mechanisms described in this document. The signal level is compared to a fixed threshold level. In addition, the signal level threshold crossings can trigger Logic functions and be recorded in the device's event log.

### Meter Trigger and Logic Source

#### Meter Trigger Operation

The Meter Trigger operates in the same way as the Peak Meter with the addition of threshold functionality and trigger indicator. The trigger indicator will turn on when the signal goes above the 0dBu mark. The threshold level can be adjusted using the Reference control. e.g. trigger threshold will be -20dB if the Reference is set at -20dB. The Attack and Release controls can be used to adjust the speed at which the meter will respond. A high pass or low pass filter placed before the Meter Trigger could be used to restrict the range of frequencies being monitored. e.g. The Meter Trigger would only react only to low frequencies if a low pass filter is used. A high frequency pilot tone could be monitored if a high pass filter is used.

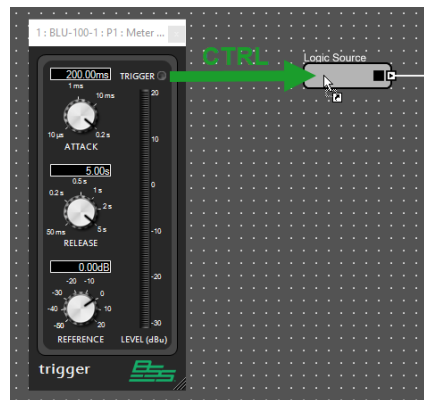


# Monitoring and Logging Signal Level in Soundweb London



## Meter Trigger Indicator and Logic Source

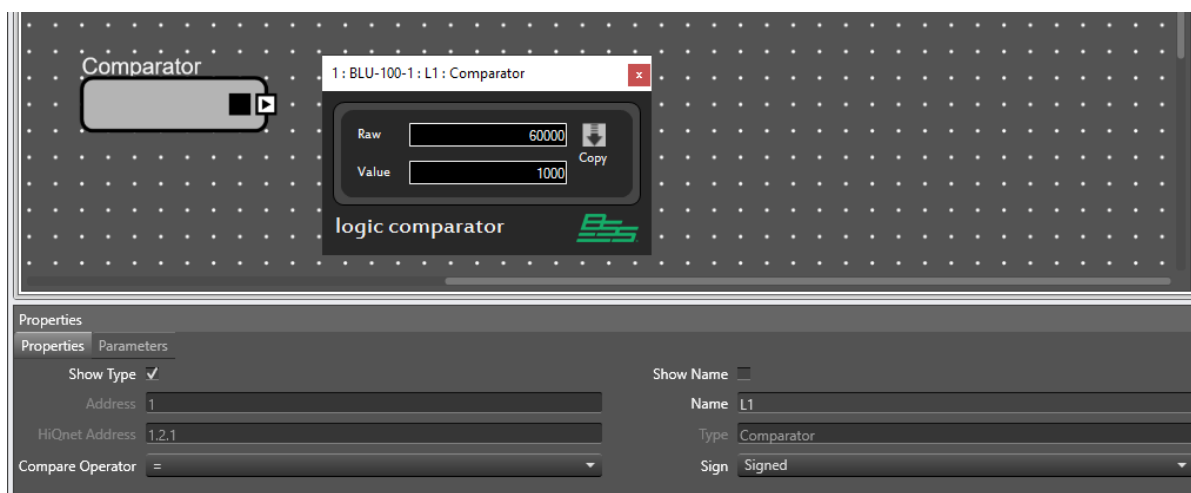
The trigger indicator can be used in the Logic Configuration for advanced functionality. Add a Logic Source in the Logic Configuration then drag the trigger indicator onto the object while holding down the CTRL key. The Logic Source will go high when the trigger indicator is on and low when the indicator is off.



## Meter and Logic Comparator

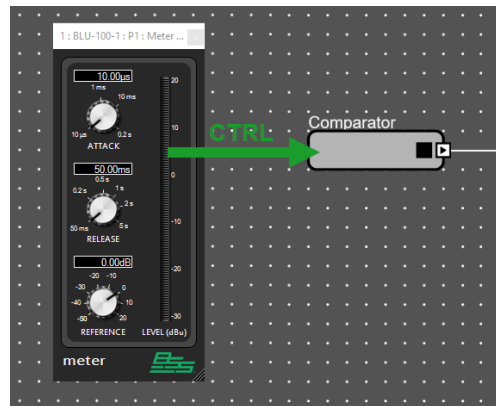
### Logic Comparator Operation

Any continuous parameter can be assigned to the Logic Comparator. Continuous parameters include faders, rotary controls or meters. The value of the parameter (Raw) can be compared to a defined threshold (Value) with respect to the Compare Operator. Values will range between -800000 (-80dB) to 400000 (+40dB). 0dB is value 0.

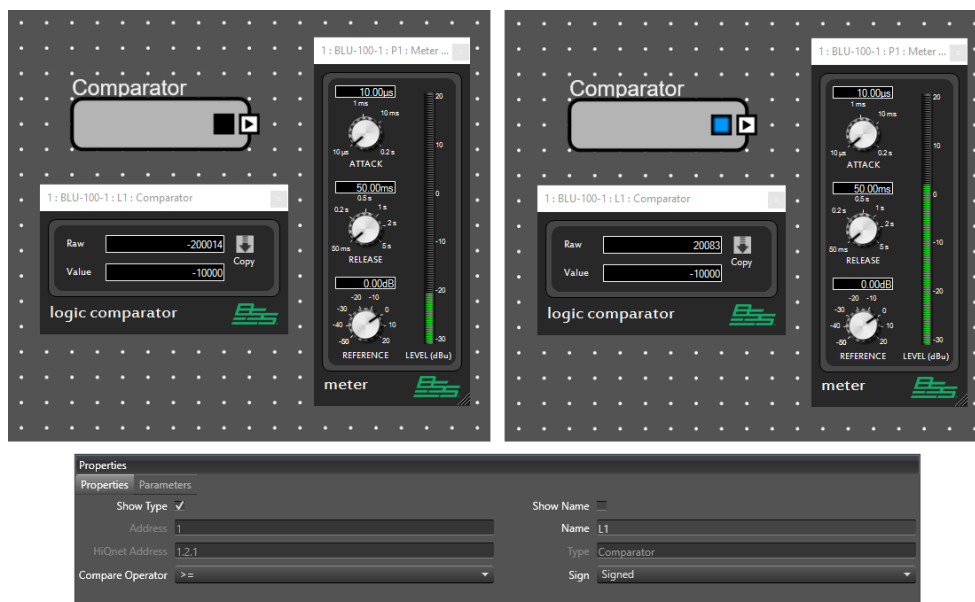


# Monitoring and Logging Signal Level in Soundweb London

Add a Logic Comparator then drag the parameter onto the object while holding down the CTRL key.



The example below illustrates a Meter assigned to a Logic Comparator. The threshold (Value) is -10000 which represents -10dB. The Compare Operator is  $\geq$  (greater or equal to). The Logic Comparator will go high when the meter level is greater or equal to -10dB and low when the meter level is below -10dB.



## Logic Functionality

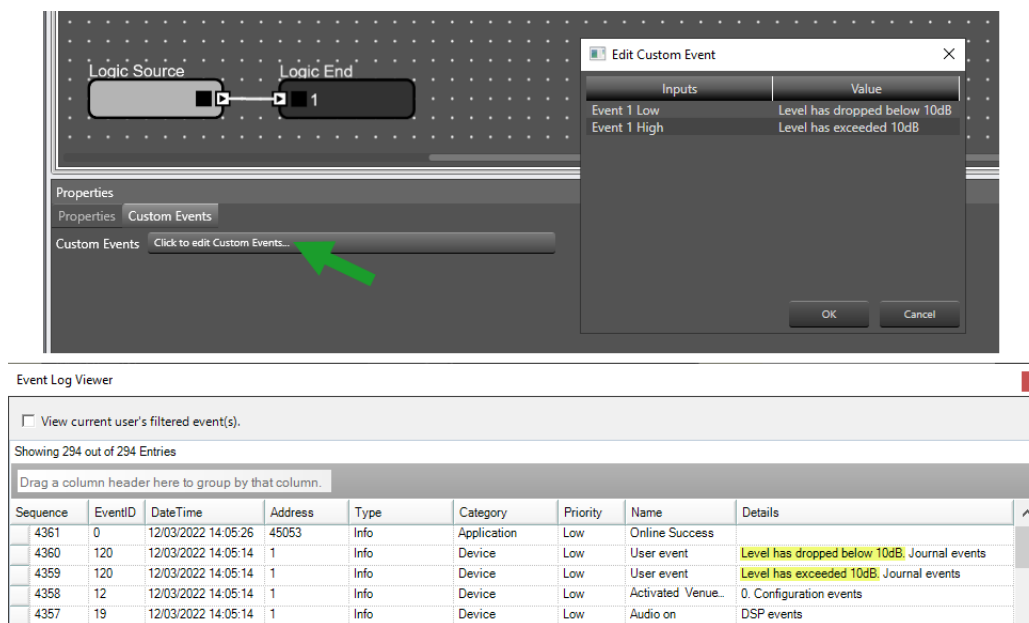
The high or low states of the Logic Source and Logic Comparator can be used with a variety of Logic objects.

# Monitoring and Logging Signal Level in Soundweb London



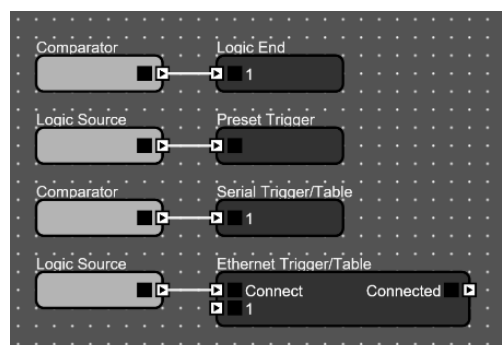
## Logic End and Event Log

The Logic End can be associated with two-state parameters in audio processing objects (e.g. Mute, Solo, Bypass, Matrix Router crosspoint, etc). It can also be associated to Indicators on Custom Panels. Custom events can be written to the device's event log by entering text into the Custom Event properties. The events will appear in the Audio Architect Event Log Viewer when collected from the device.



## Other Logic Objects

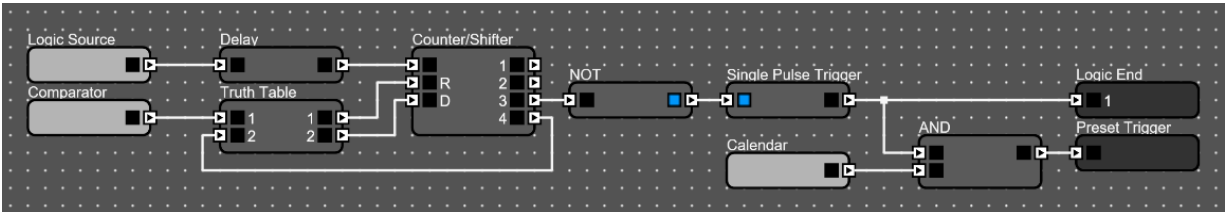
The Logic Source or Logic Comparator can be wired to any other End object such as the Preset Trigger, Ethernet Trigger or Serial Trigger.



# Monitoring and Logging Signal Level in Soundweb London



The Logic Source and Logic Comparator can also be integrated into more complex Logic configurations when required.



## About HARMAN Professional Solutions

HARMAN Professional Solutions is the world's largest professional audio, video, lighting, and control products and systems company. Our brands comprise AKG Acoustics®, AMX®, BSS Audio®, Crown International®, dbx Professional®, JBL Professional®, Lexicon Pro®, Martin®, and Soundcraft®. These best-in-class products are designed, manufactured and delivered to a variety of customers in markets including tour, cinema and retail as well as corporate, government, education, large venue and hospitality. For scalable, high-impact communication and entertainment systems, HARMAN Professional Solutions is your single point of contact. [www.harman.com](http://www.harman.com)

