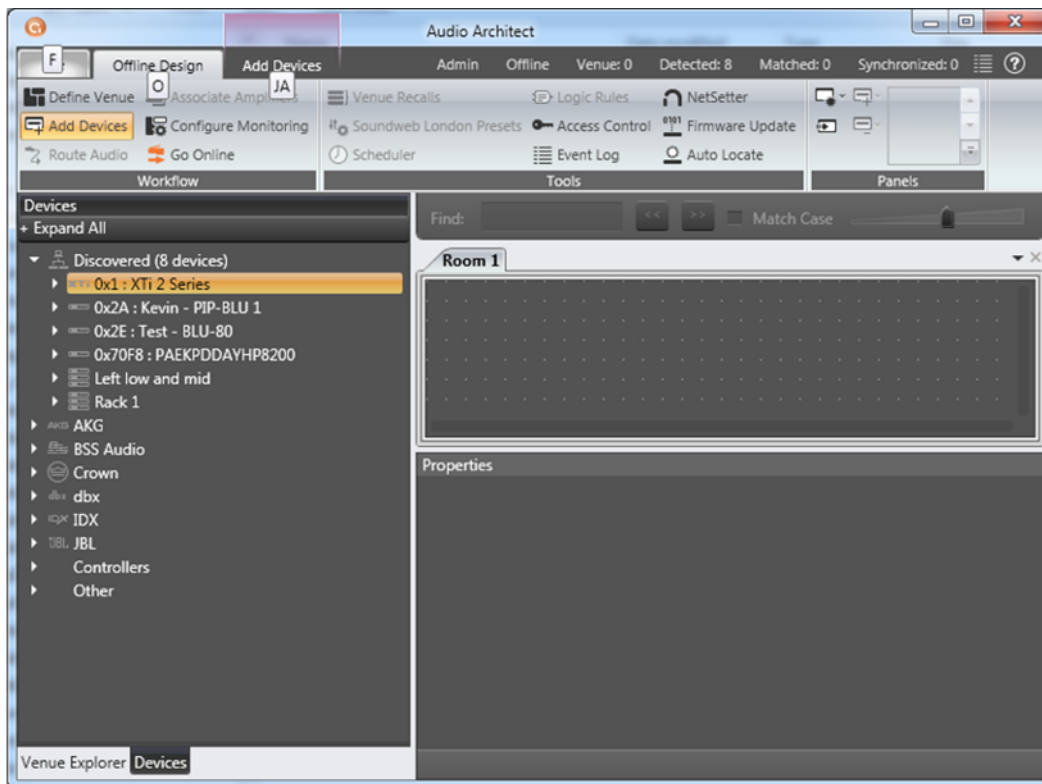


Applicability:

The CDi, DSi and XTi models do not have a reset button for restoring factory settings. The following set of instructions will show you how to return the amplifier settings to original factory settings. This process requires Harman Audio Architect or System Architect software.

Step 1:

Open Audio Architect software while the amplifier is turned on and plugged into the computer's USB port. Your amplifier should be listed under Discovered devices on the left.

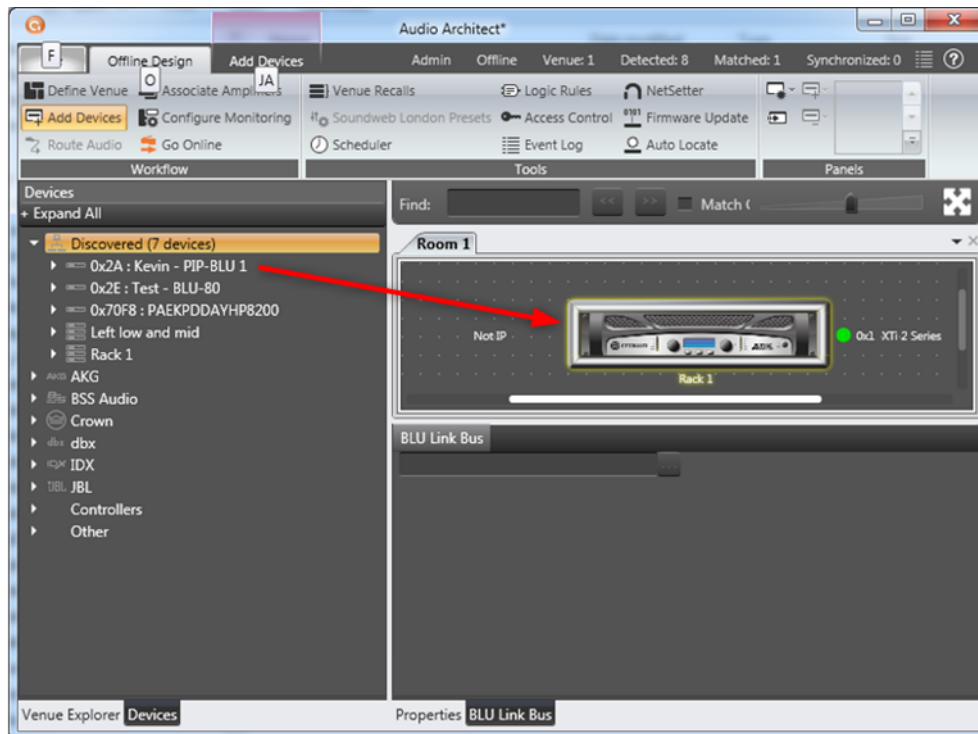


Restoring XTi CDi DSi to Factory Default



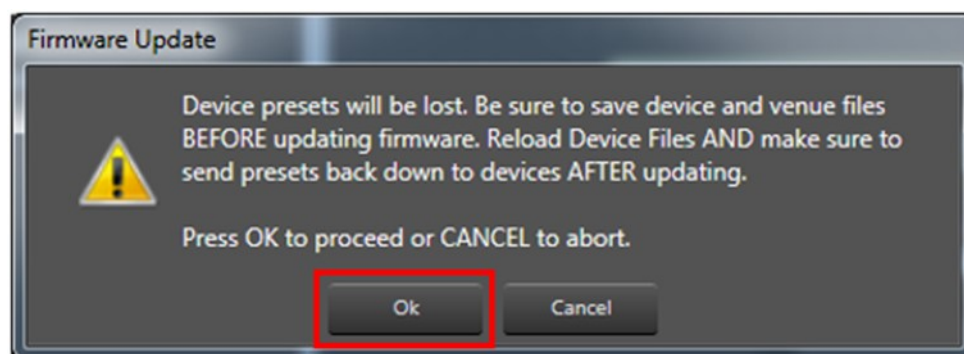
Step 2:

Click and drag the desired amplifier into the Room 1 tab.



Step 3:

Click on Firmware Update in the top ribbon. A smaller information window will appear. Select OK.



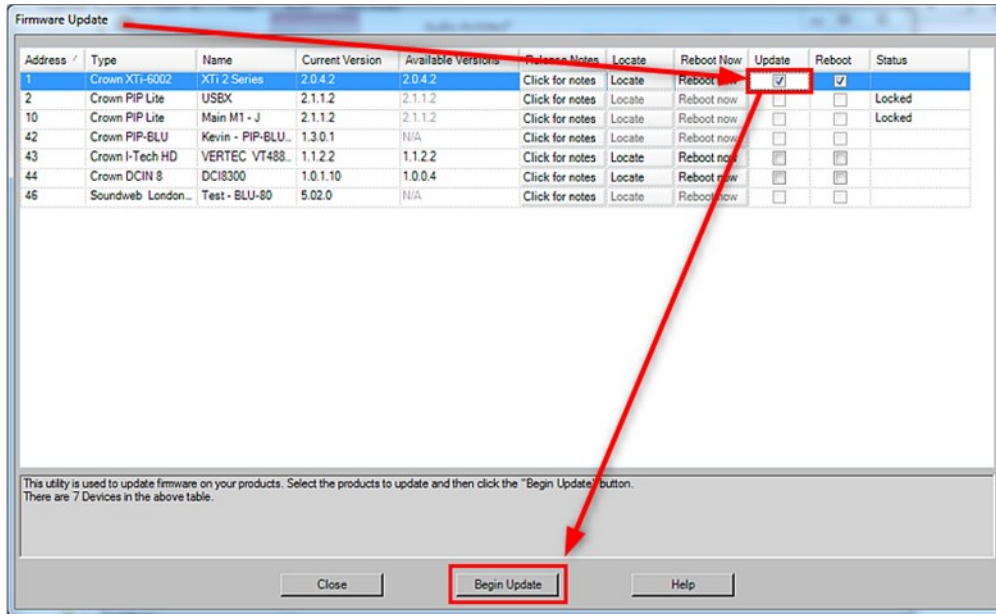
WARNING! DO NOT UNPLUG AMPLIFIER OR INTERRUPT FIRMWARE PROCESS ONCE IT BEGINS

Restoring XTi CDi DSi to Factory Default



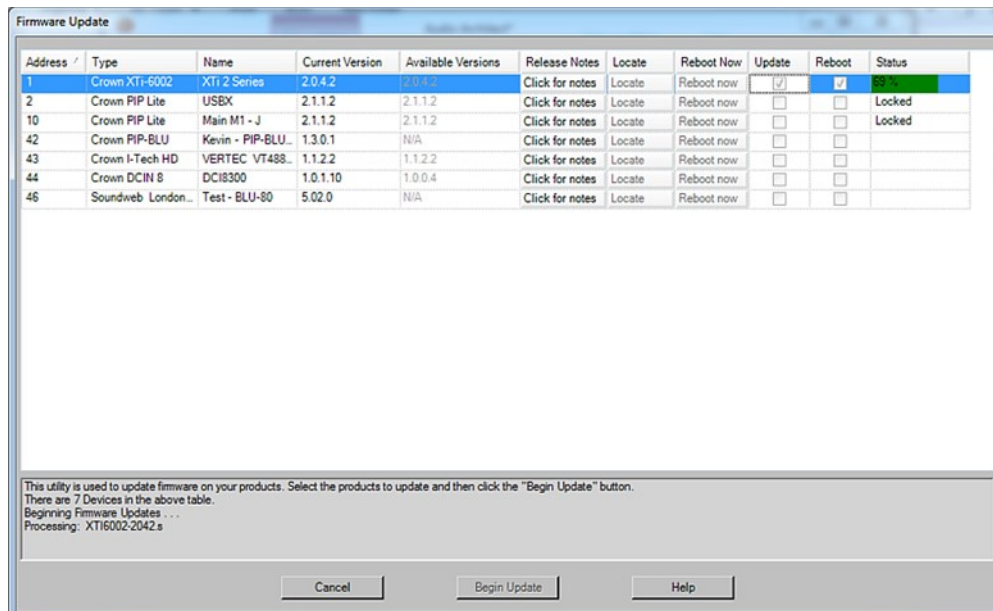
Step 4:

Check the Update box for the line item of your amplifier and select Begin Update.



Step 5:

The firmware will be loaded into the amplifier.

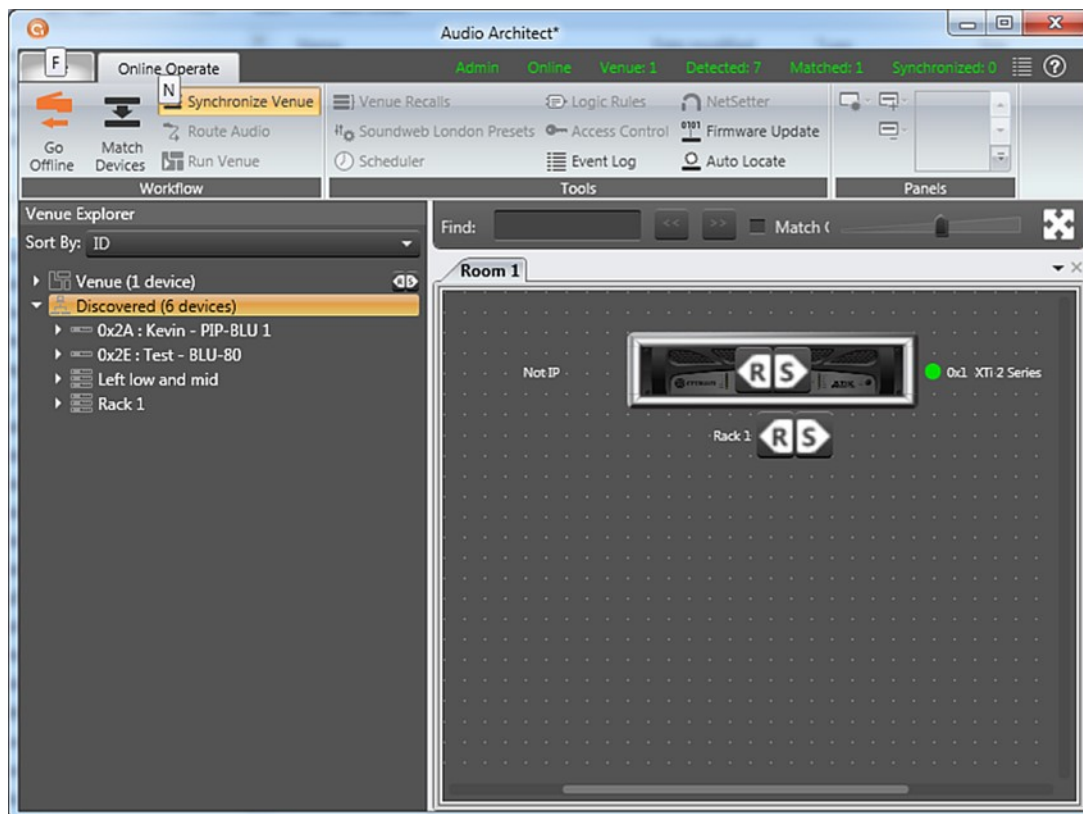


Restoring XTi CDi DSi to Factory Default



Step 6:

Click Close to return to the room and choose Go online. The letters R and S will appear on the front panel of the amplifier in the software. Click on the R for receive from the amplifier (S will send the previous settings back into amplifier). The amplifier should now be loaded with the original factory settings and presets. All other settings will be erased.



About HARMAN Professional Solutions

HARMAN Professional Solutions is the world's largest professional audio, video, lighting, and control products and systems company. Our brands comprise AKG Acoustics®, AMX®, BSS Audio®, Crown International®, dbx Professional®, DigiTech®, JBL Professional®, Lexicon Pro®, Martin®, and Soundcraft®. These best-in-class products are designed, manufactured and delivered to a variety of customers in markets including tour, cinema and retail as well as corporate, government, education, large venue and hospitality. For scalable, high-impact communication and entertainment systems, HARMAN Professional Solutions is your single point of contact. www.harman.com

