



v1.0

Setting up the ARA in Ableton Live

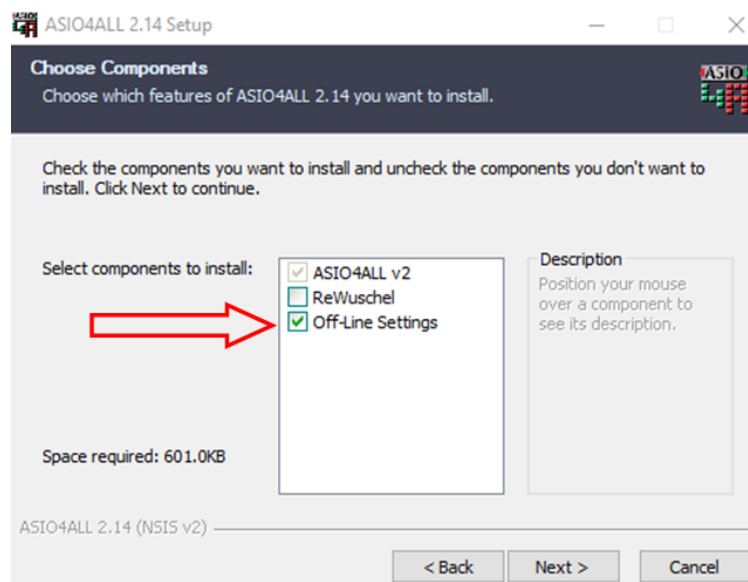
31-Jan-23

ASIO Driver Setup for Windows

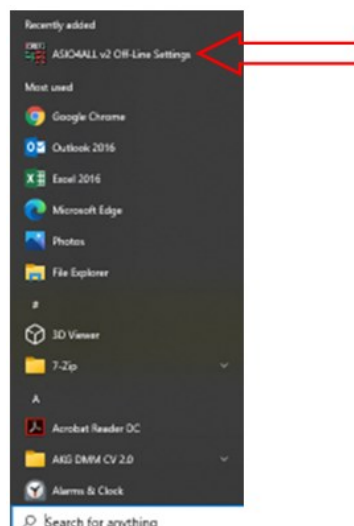
It is recommended that you download the latest ASIO driver from www.asio4all.com.

Install the ASIO Driver by following the instructional prompts on the Windows computer.

When prompted to “choose components”, make sure “Off-line Settings” is selected.



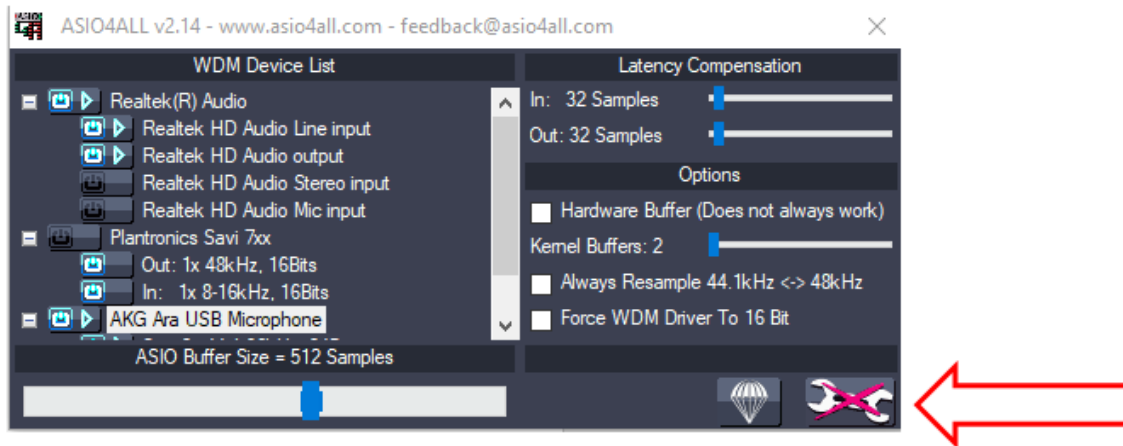
Open the ASIO Off-line Settings menu from the Windows Start menu.



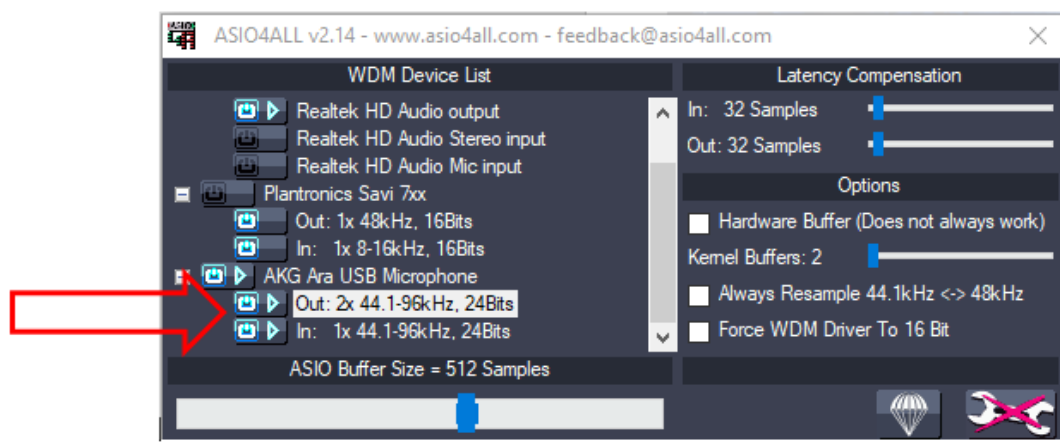
Setting up the ARA in Ableton Live



Click the wrench in the bottom corner to open advanced settings.



Make sure the AKG ARA USB Microphone is selected as the active device (both inputs and outputs), and make sure all other devices are not active.



From this menu, you can set all of the buffer settings as desired.

NOTE: TURN OFF THE MICROSOFT SYSTEM SOUNDS ONCE YOU INSTALL THE ASIO DRIVER AS THE SYSTEM SOUNDS MAY INTERFERE WITH ASIO DEVICE COMMUNICATION.

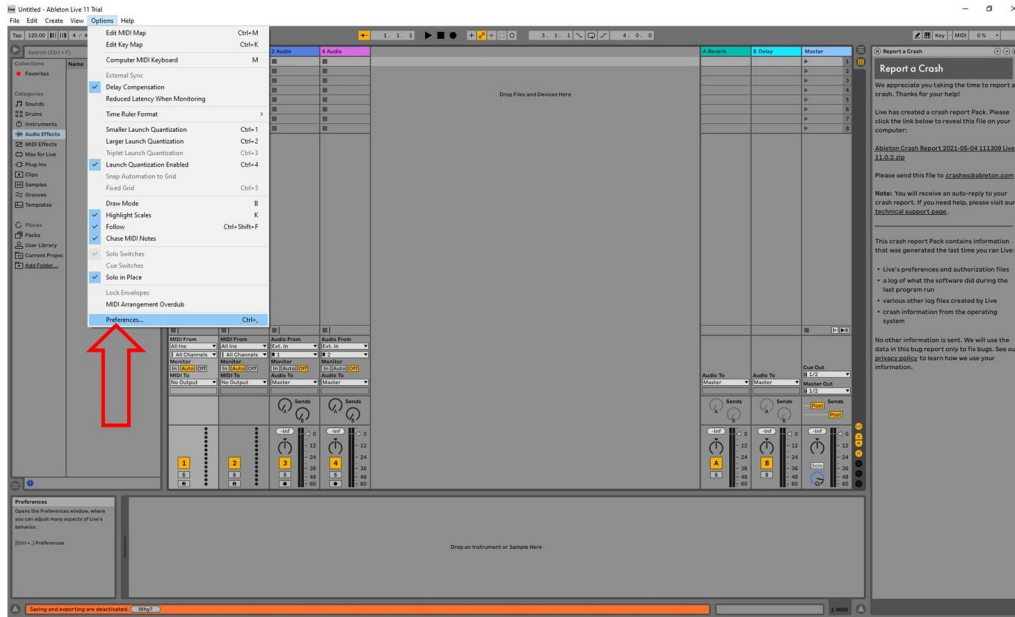
Setting up the ARA in Ableton Live



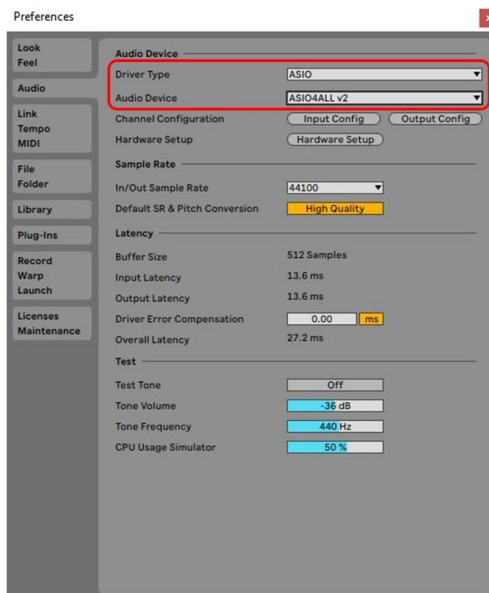
Ableton Live setup for Windows

Open the Ableton Live application.

Select Preferences from the Options menu.



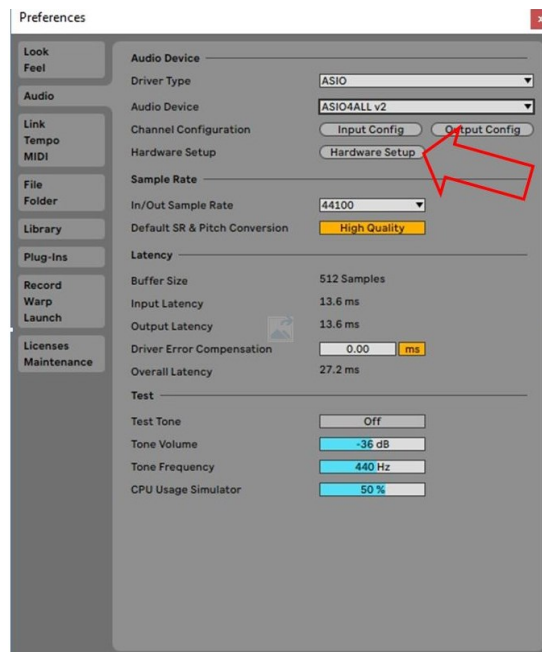
From the Audio tab, Select “ASIO” as the Driver Type, and “ASIO4ALL v2” as the Audio Device.



Setting up the ARA in Ableton Live



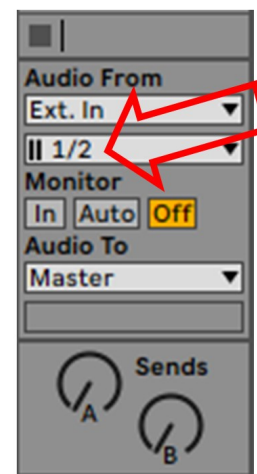
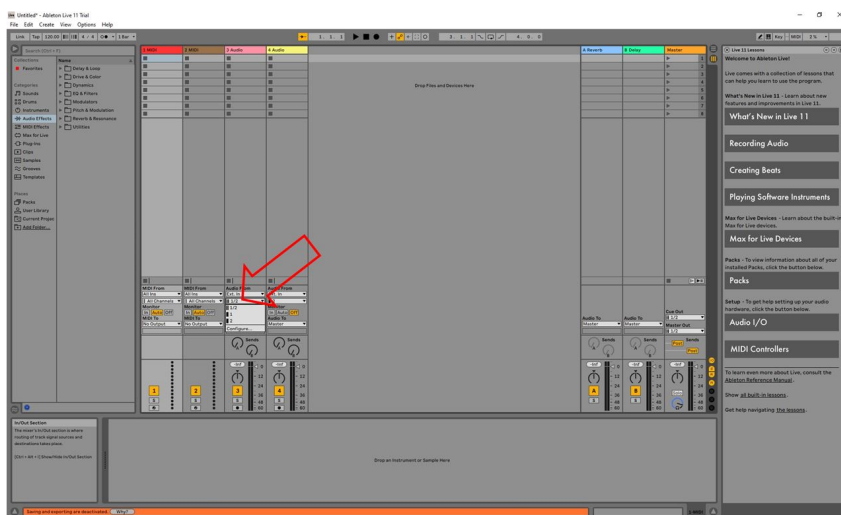
By selecting “Hardware Setup” in the Audio tab, you can make sure your ASIO settings are correct.



Make sure that the Sample Rate is set to the same setting as the Windows System Settings.

From the Audio tab, you can also set the buffer settings. As a rule, the larger the buffer size, the greater the chance of input latency.

Set the input on your audio track to input 1/2.



You are ready to begin recording.

Setting up the ARA in Ableton Live



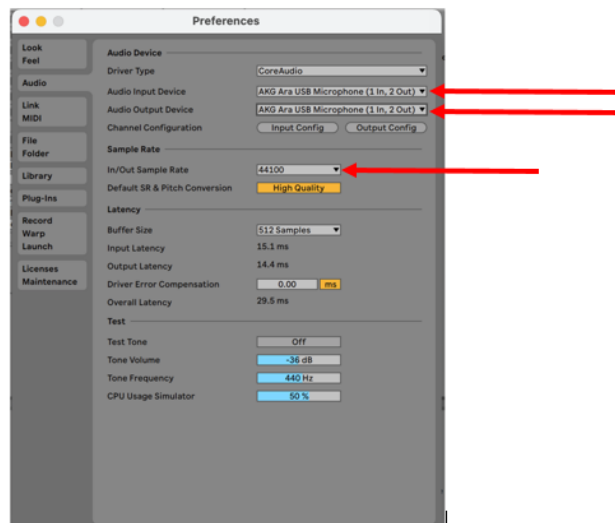
Ableton Live setup for MAC

Open the Ableton Live application .

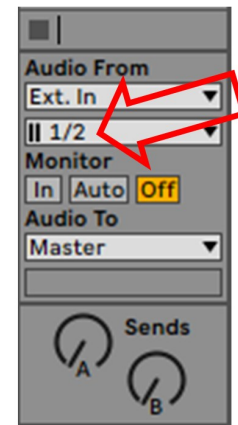
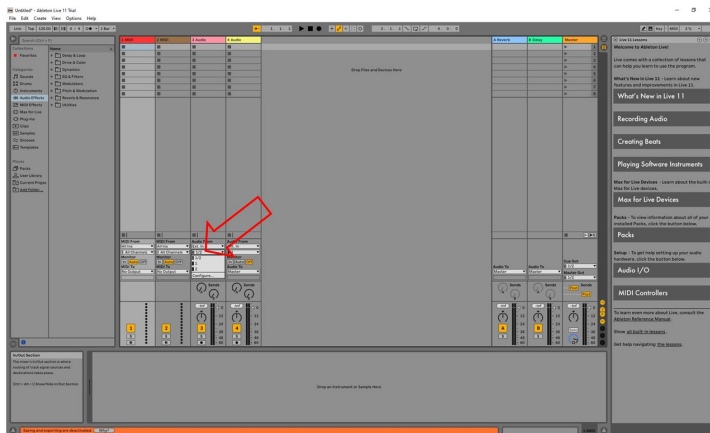
Go to Ableton > Preferences and select the Audio Tab.

Select the AKG ARA USB as the input and output device.

From this screen, you will also want to make sure your In/Out sample rate is set to the same settings as the system settings.



Select 1/2 as the input on your audio track .



You are ready to begin recording.

About HARMAN Professional Solutions

HARMAN Professional Solutions is the world's largest professional audio, video, lighting, and control products and systems company. Our brands comprise AKG Acoustics®, AMX®, BSS Audio®, Crown International®, dbx Professional®, JBL Professional®, Lexicon Pro®, Martin®, and Soundcraft®. These best-in-class products are designed, manufactured and delivered to a variety of customers in markets including tour, cinema and retail as well as corporate, government, education, large venue and hospitality. For scalable, high-impact communication and entertainment systems, HARMAN Professional Solutions is your single point of contact. www.harman.com

