

v1.0

Dante device name and Dante channel names in BSS Soundweb London

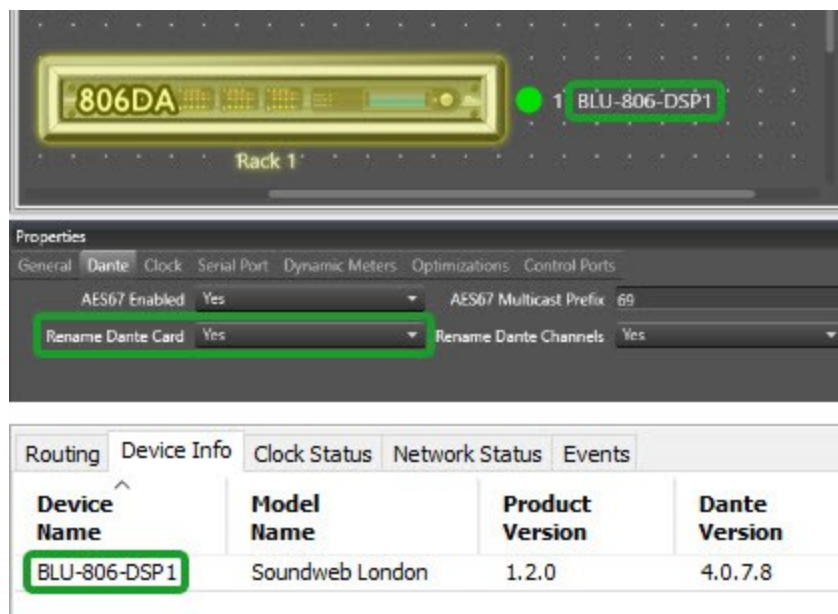
9-Dec-24

Dante Devices

BSS Soundweb London devices with Dante functionality include the BLU-806, BLU-326 and BLU-DA. These model contain a Brooklyn II Dante card licensed by Audinate. The Soundweb London device name and Dante channel labels are dictated by the conventions used by the Dante card.

Dante Device Name

- Up to 30 characters.
- May use any character except equals (=) period (.) at (@).
- Device names cannot start with a number or hyphen (-).
- Device names cannot end with a hyphen (-)
- Device names are not case-sensitive.
- Device names must be unique on the network.



The Device Name entered in Audio Architect will be pushed to the Dante card if the Rename Dante Card property is set to Yes. This is the default setting. It will not be possible to rename the Dante Device Name using Dante Controller with this setting.

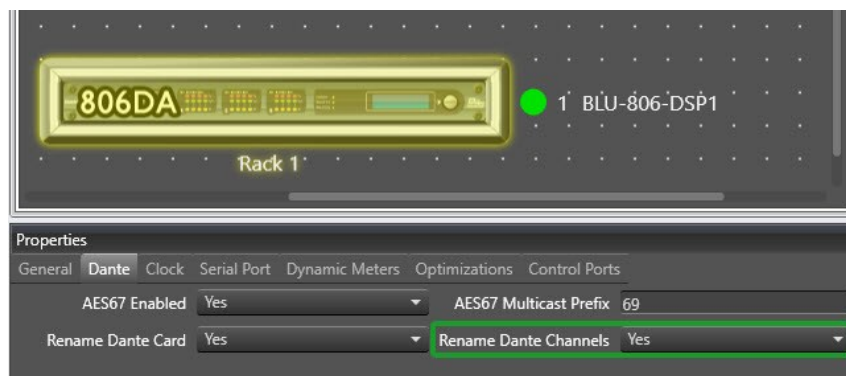
Dante device name and Dante channel names in BSS Soundweb London



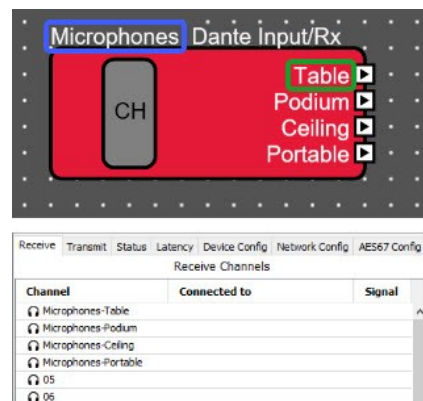
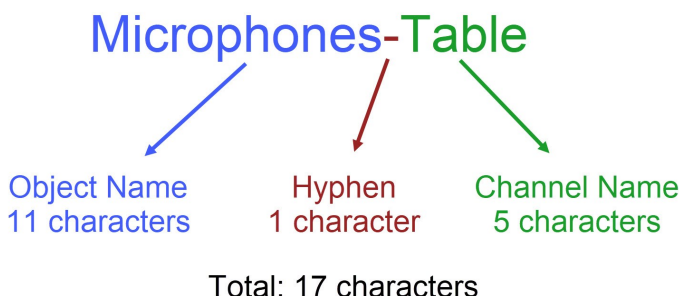
Dante Channel Labels

- Up to 30 characters. This includes the Dante object name and hyphen (-).
- A hyphen (-) is automatically added between the Dante object name and Dante Channel Name.
- May use any character except equals (=) period (.) at (@)
- Channel labels are not case-sensitive.
- Channel labels cannot start with a hyphen (-).
- Channel labels must be unique for each device.

The Dante Channel Names entered in Audio Architect will be pushed to the Dante Card if the Rename Dante Channels property is set to Yes. It will not be possible to rename the Dante Device Name using Dante Controller with this setting.



The Dante channel label will comprise the Object Name and Channel Name separated with a hyphen (-)



About HARMAN Professional Solutions

HARMAN Professional Solutions is the world's largest professional audio, video, lighting, and control products and systems company. Our brands comprise AKG Acoustics®, AMX®, BSS Audio®, Crown International®, dbx Professional®, JBL Professional®, Lexicon Pro®, Martin®, and Soundcraft®. These best-in-class products are designed, manufactured and delivered to a variety of customers in markets including tour, cinema and retail as well as corporate, government, education, large venue and hospitality. For scalable, high-impact communication and entertainment systems, HARMAN Professional Solutions is your single point of contact. www.harman.com

