

v1.0

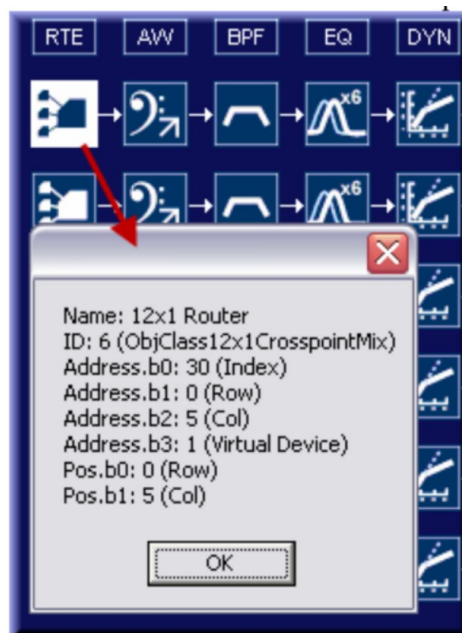
Object ID Index Number Offset in ZonePro GUI Designer

18-Jul-22

Question:

Why are my Object ID Index numbers off by two or more?

Example; RTE for output is index 32 instead of 30?



Answer:

If you change an input from Mono to Stereo, it will increase the number of input objects and that will change the index number scheme causing the index numbers to increase. Each input that you change will change the index numbers. Switching from Stereo to Mono will reduce the Index numbers.

About HARMAN Professional Solutions

HARMAN Professional Solutions is the world's largest professional audio, video, lighting, and control products and systems company. Our brands comprise AKG Acoustics®, AMX®, BSS Audio®, Crown International®, dbx Professional®, DigiTech®, JBL Professional®, Lexicon Pro®, Martin®, and Soundcraft®. These best-in-class products are designed, manufactured and delivered to a variety of customers in markets including tour, cinema and retail as well as corporate, government, education, large venue and hospitality. For scalable, high-impact communication and entertainment systems, HARMAN Professional Solutions is your single point of contact. www.harman.com