

v1.0

Using a Fan with a Smoke Machine

05-May-22

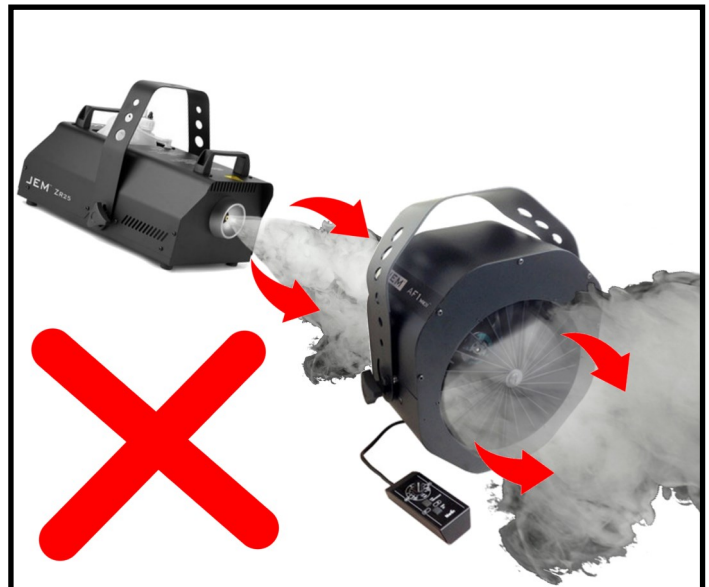
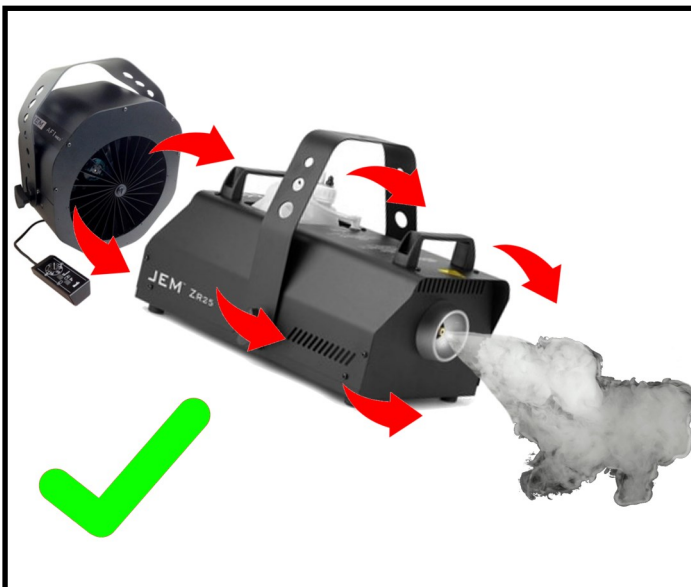
Question:

How do I correctly use a fan to assist with smoke coverage/dispersion?

Answer:

When using a fan to assist with smoke coverage and dispersion it is always recommended to place the fan behind the smoke machine with the air blowing over the machine and NOT to push smoke through the fan.

With a fan in front of a smoke machine you will reduce the lifespan of the fan and possibly cause premature failure and damage to the fan motor due to condensation of the smoke on the fan surfaces/motor.

**About HARMAN Professional Solutions**

HARMAN Professional Solutions is the world's largest professional audio, video, lighting, and control products and systems company. Our brands comprise AKG Acoustics®, AMX®, BSS Audio®, Crown International®, dbx Professional®, DigiTech®, JBL Professional®, Lexicon Pro®, Martin®, and Soundcraft®. These best-in-class products are designed, manufactured and delivered to a variety of customers in markets including tour, cinema and retail as well as corporate, government, education, large venue and hospitality. For scalable, high-impact communication and entertainment systems, HARMAN Professional Solutions is your single point of contact. www.harman.com