

Si Fader Setup - Add or Remove Channels from Surface & Patching

How to add or subtract channels from surface of Si Mixers

Default configuration has 32 channels on surface. This will show how to add or subtract channels from surface.

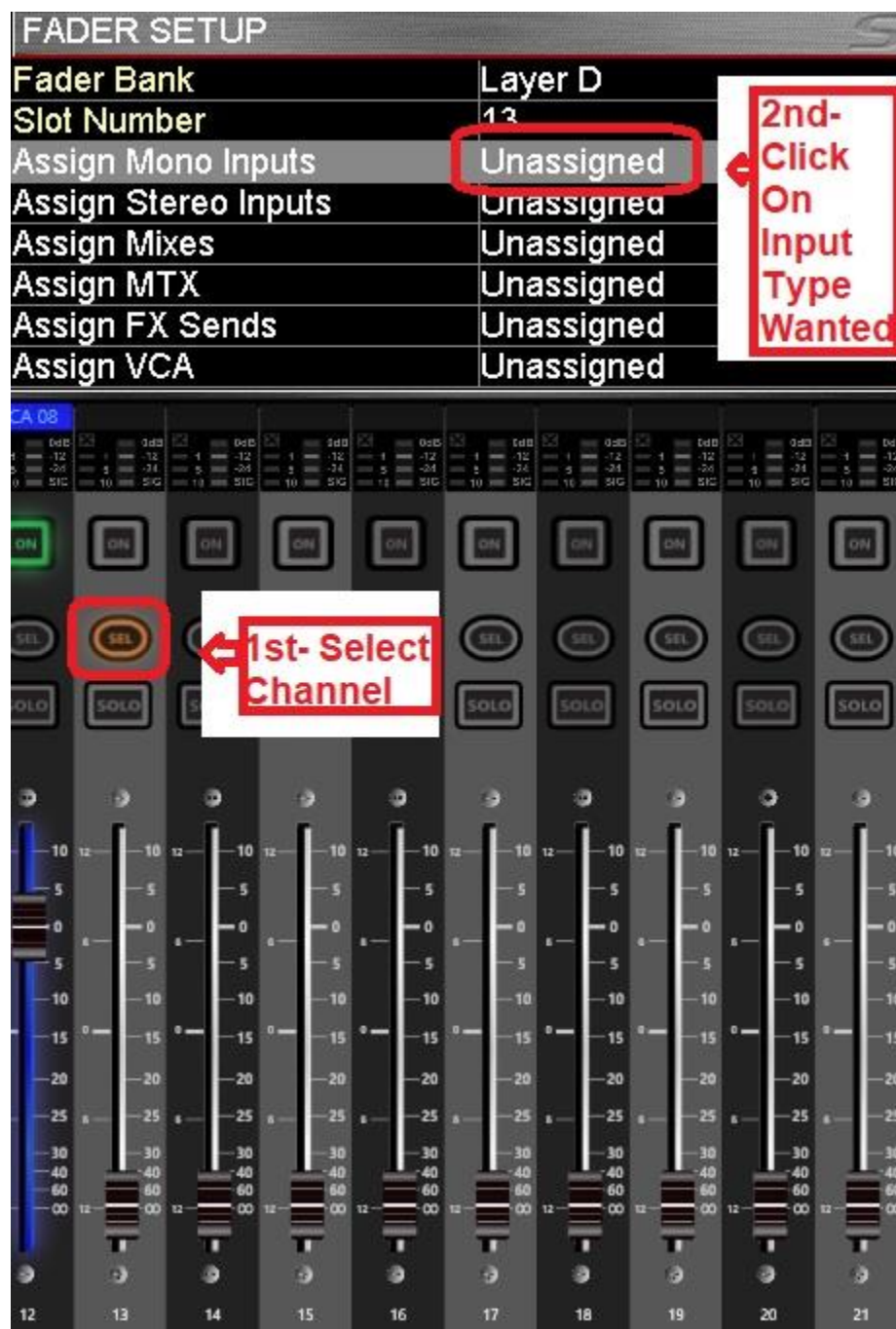
Si Mixers have 64 channels of DSP available (plus F/X returns and line in on Expression and Performer)

You can easily add or remove channels from surface on Si Mixers. Especially with the v2 software upgrade on Si Impact, the channels of DSP are available, just not on surface by default. The number of channels you use depends on surface size and configuration. On a side note, the channels are there, even if not on the surface, and all channels can be operated in ViSi remote.

- I. Select Fader Setup on screen.



2. Select channel, then scroll to and click on input type you want to assign.



3. Scroll until desired channel is found, then push in on encoder to select.



4. This is what it will look like once selected.

The screenshot displays the 'FADER SETUP' window. At the top, a table lists the configuration for Fader Bank 13:

Fader Bank	Layer D
Slot Number	13
Assign Mono Inputs	CH 64
Assign Stereo Inputs	Unassigned
Assign Mixes	Unassigned
Assign MTX	Unassigned
Assign FX Sends	Unassigned
Assign VCA	Unassigned

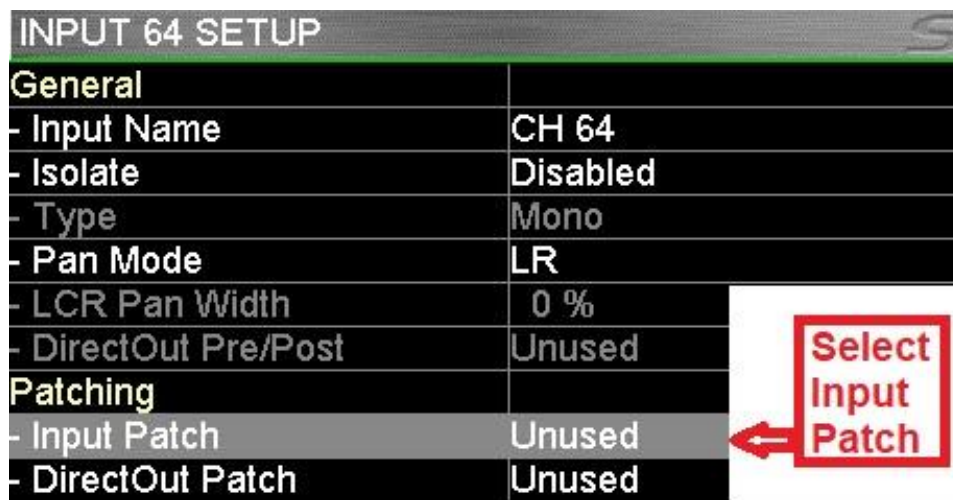
Below the table, a red callout box states: "Here You Can See That Channel 64 Has Been Selected".

The main interface shows a grid of faders. The first fader (Slot 12) is labeled 'A 08' and 'CH 64'. A red callout box points to it, stating: "Channel Will Also Show". The fader is currently set to 0 dB. Below the fader, there are buttons for 'ON', 'SEL', and 'SOLO'. The 'SEL' button is highlighted in orange. The fader is part of a bank of 10 faders, numbered 12 through 21.

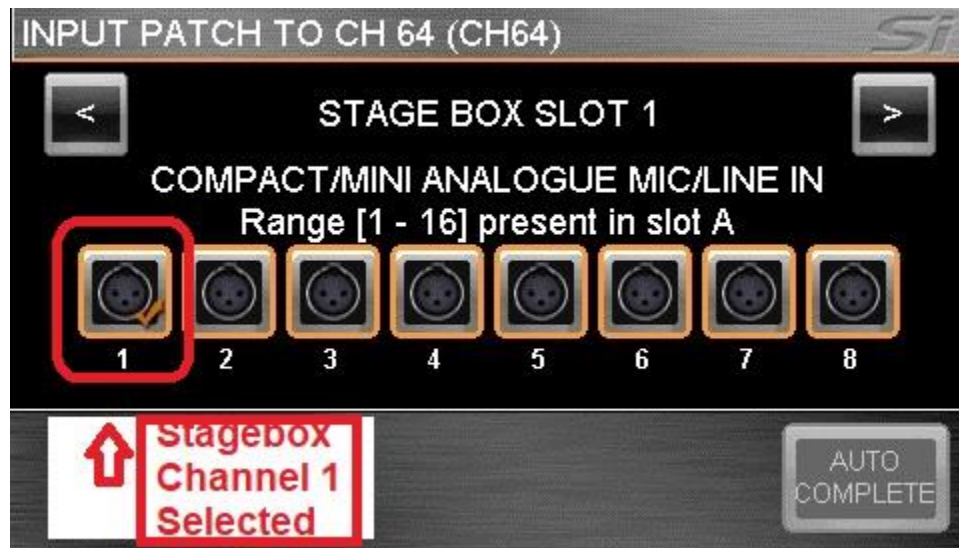
- Now we can patch the channel. Select Inputs (& VCA on Impact and Performer).



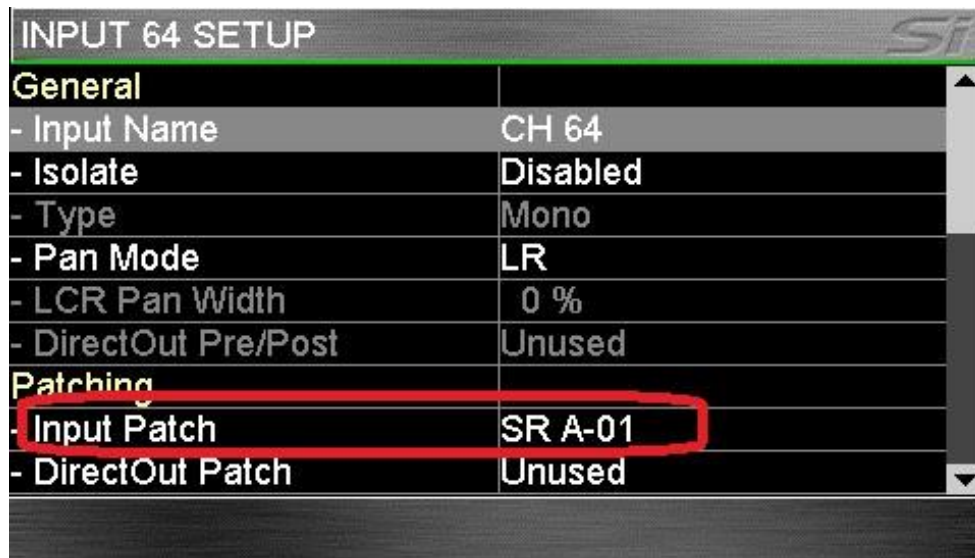
- Scroll to and select Input Patch.



7. In the example below, we selected Stagebox channel 1.



8. This shows the Input patch as SR A-01, which is Channel 1 on Stagebox.

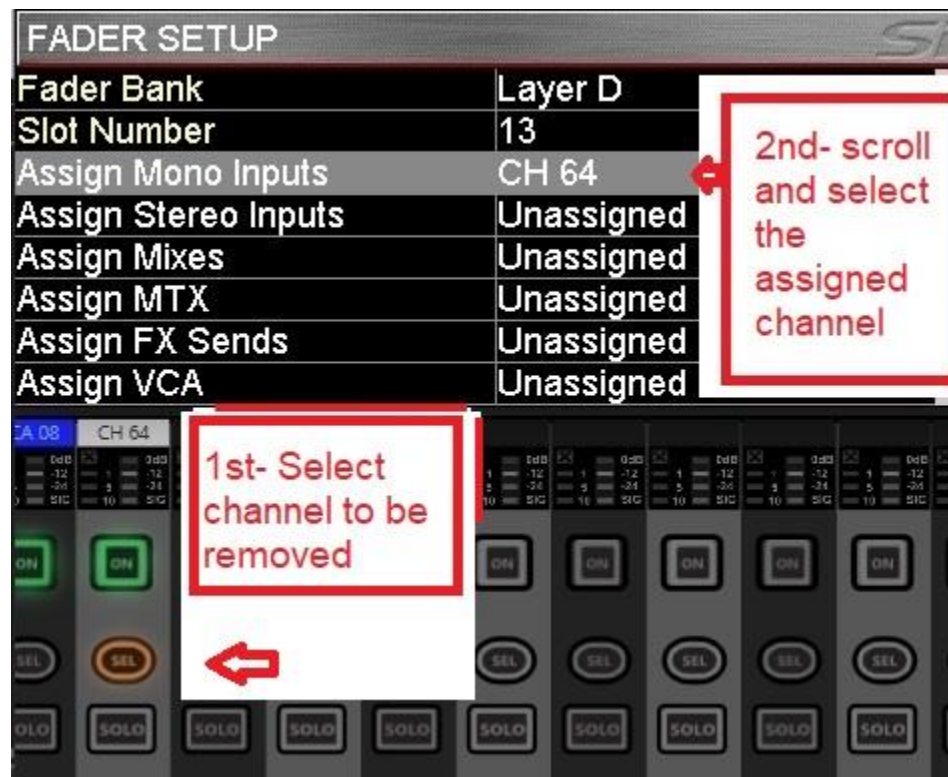


To remove channels from surface, just repeat process but select Unused for all selections.

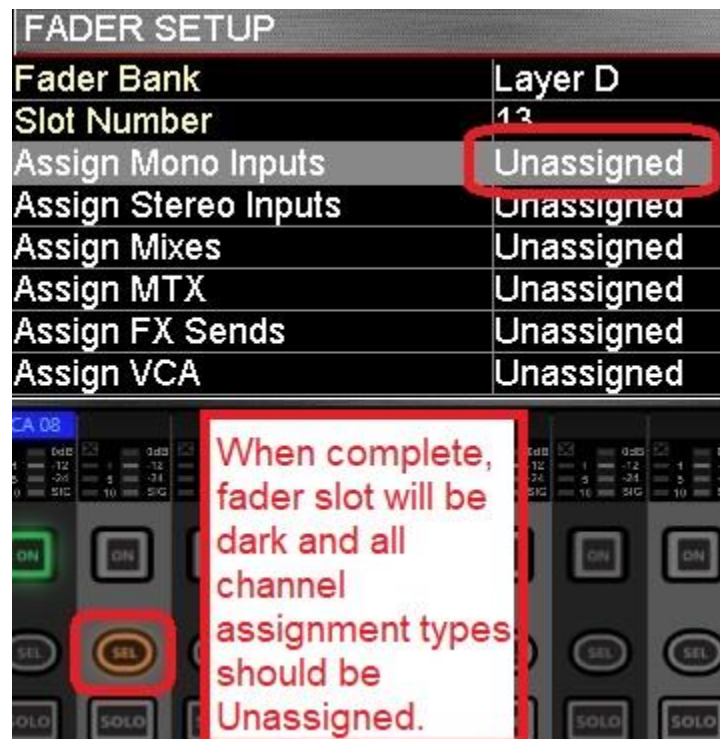
1) Select Fader Setup.



2) Select the fader you want to change, then set all assignments to Unassigned.



- 3) When completed, the fader slot will be dark, and all channel assignments will be Unused.



About HARMAN Professional Solutions

HARMAN Professional Solutions is the world's largest professional audio, video, lighting, and control products and systems company. Our brands comprise AKG Acoustics®, AMX®, BSS Audio®, Crown International®, dbx Professional®, DigiTech®, JBL Professional®, Lexicon Pro®, Martin®, and Soundcraft®. These best-in-class products are designed, manufactured and delivered to a variety of customers in markets including tour, cinema and retail as well as corporate, government, education, large venue and hospitality. For scalable, high-impact communication and entertainment systems, HARMAN Professional Solutions is your single point of contact. www.harman.com

