

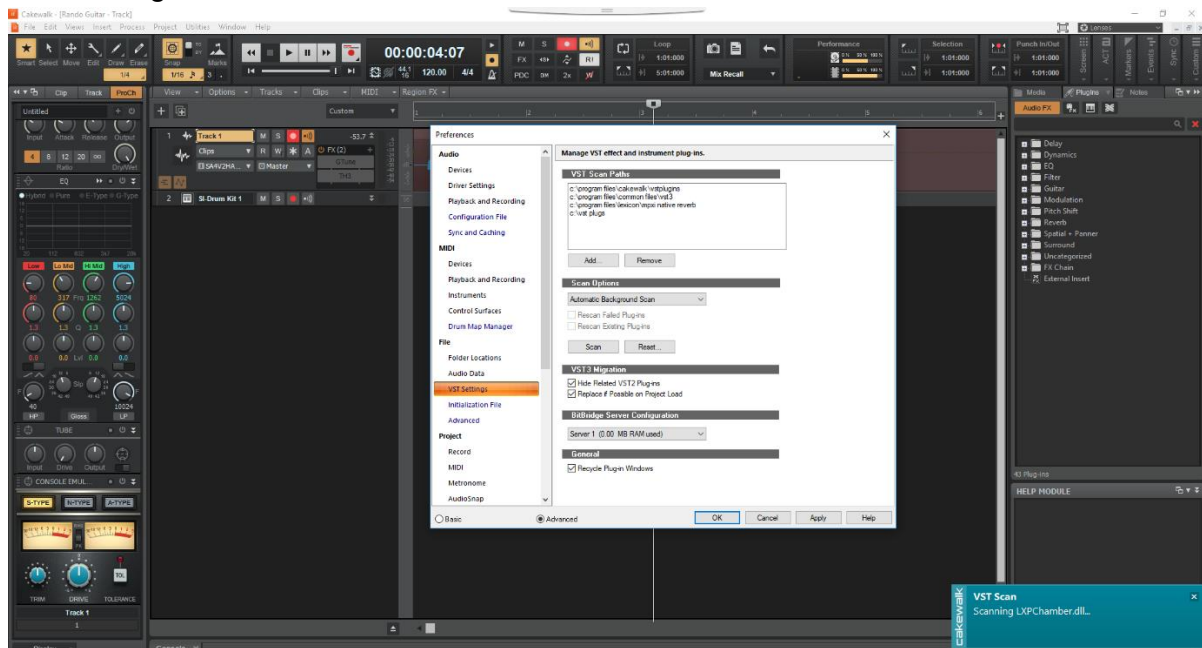
Question:

I installed my plugin. How do I get Cakewalk to see it now?

Answer:

If your plugin is not visible in Cakewalk, you will need to verify that your .dll file is located in a location in the VST scan paths.

1. With a project file open, select Edit>Preferences. (Default Cakewalk shortcut for the Preferences menus is the [P] key.)
2. Select "VST Settings"



3. You will need to click "Add" under the VST Scan Paths and add the location of your plugin's .dll file. (The default location of the install is C:\Program Files (x86)\Lexicon\)
4. Once completed, click Scan under the Scan Options section of the VST Settings.
5. Your plugin should now be visible under the plugins section on the right of your project screen.

About HARMAN Professional Solutions

HARMAN Professional Solutions is the world's largest professional audio, video, lighting, and control products and systems company. Our brands comprise AKG Acoustics®, AMX®, BSS Audio®, Crown International®, dbx Professional®, DigiTech®, JBL Professional®, Lexicon Pro®, Martin®, Soundcraft® and Studer®. These best-in-class products are designed, manufactured and delivered to a variety of customers in markets including tour, cinema and retail as well as corporate, government, education, large venue and hospitality. For scalable, high-impact communication and entertainment systems, HARMAN Professional Solutions is your single point of contact. www.harmanpro.com