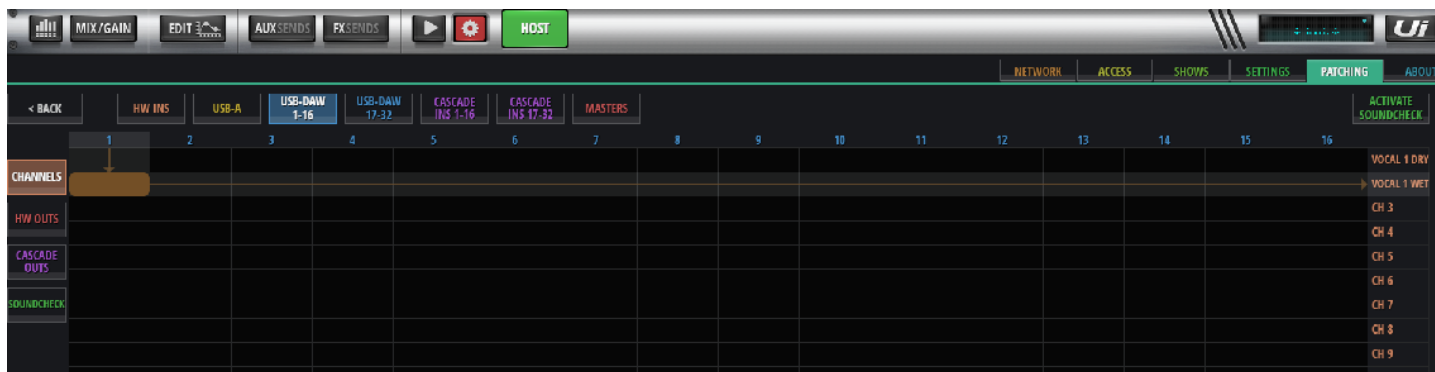
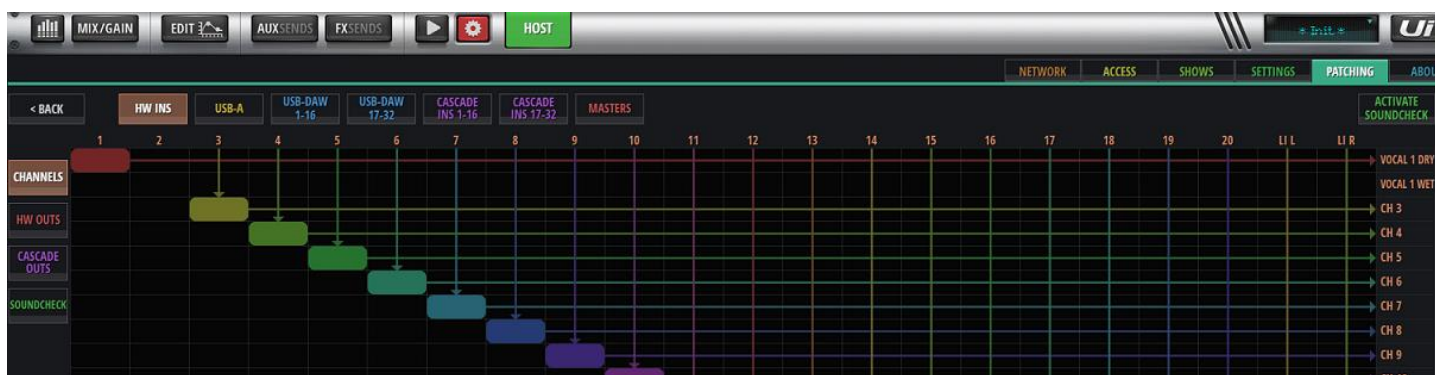


## Using a DAW Plugin as an insert on the UI24R

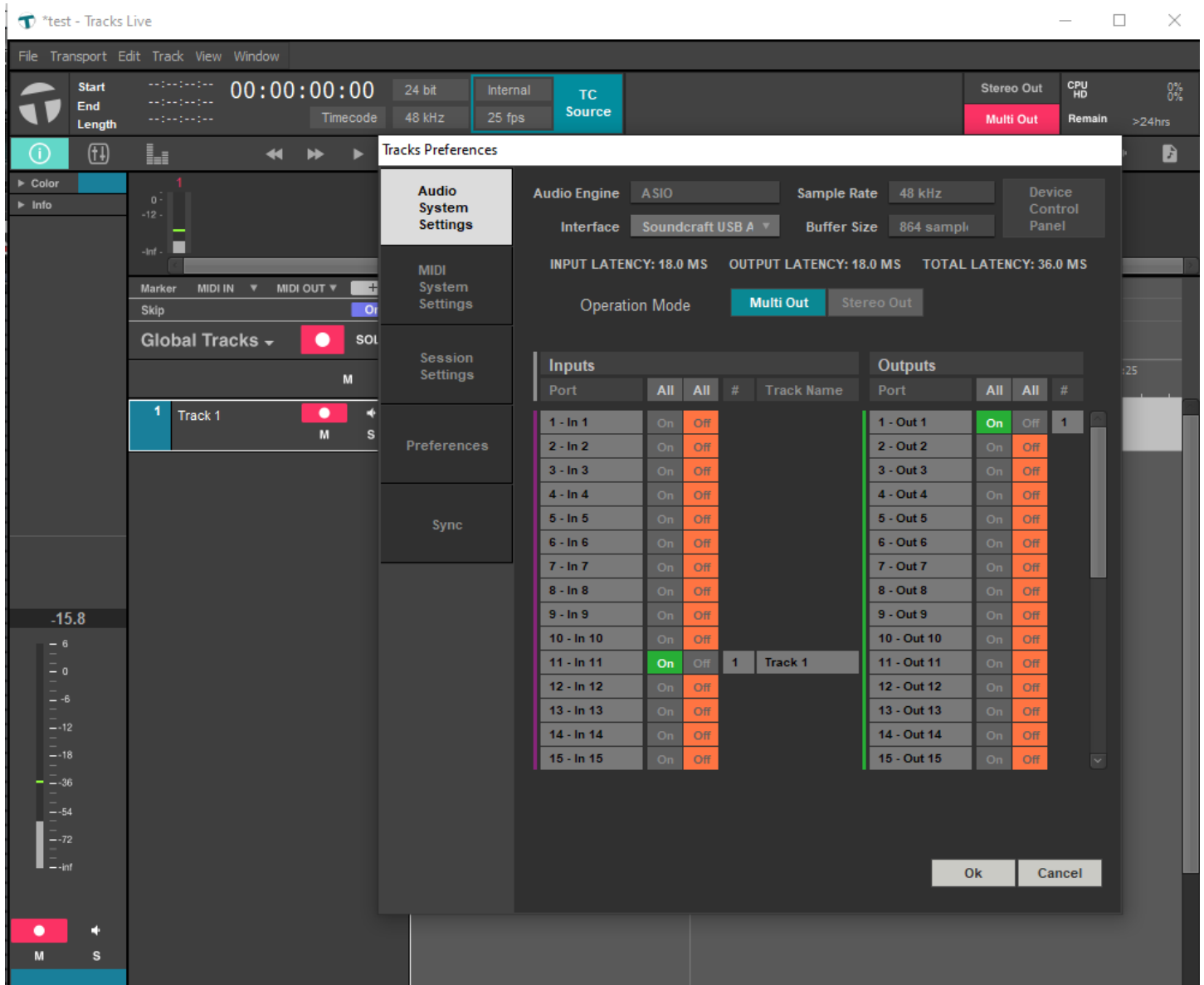
You can use the plugins from a DAW as inserts on the UI24r

## Using a channel as a send, and another as a return, you can use plugins from a DAW on UI24R

On Patching screen, select a DAW return channel for the Wet input back from the DAW. In this example, we are sending to DAW from channel 1 (channel 11 in DAW's inputs). Then we return from DAW to channel 2 of the mixer (channel 1 from the DAW).



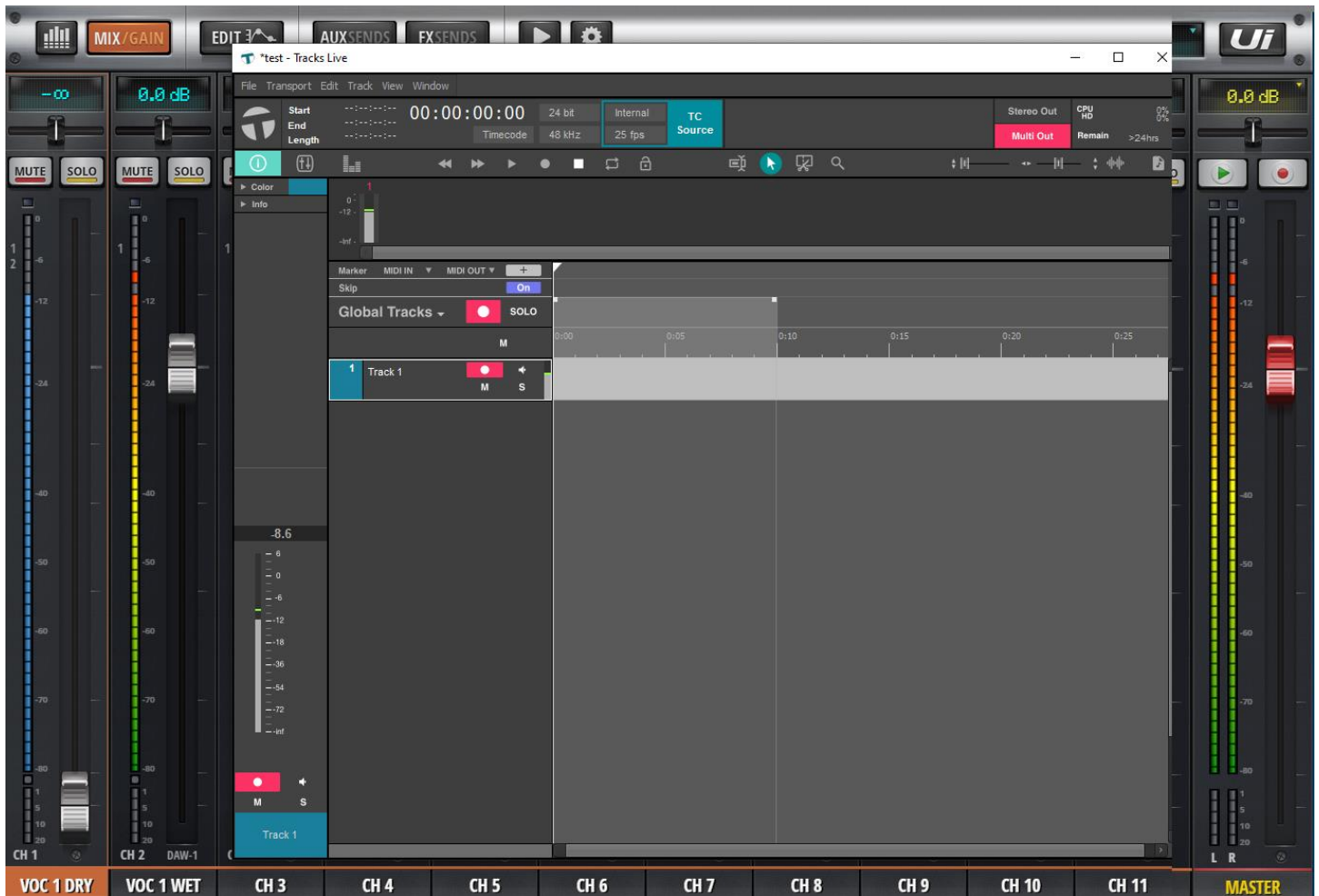
In the DAW, you will select channel 11 as input and channel 1 as output



In this example, notice that the sending channel has the fader down. This is because we do not want the Dry channel in the mix. The Return channel (Wet) is what we want to use in the mix.



This is showing the complete operation.



## About HARMAN Professional Solutions

HARMAN Professional Solutions is the world's largest professional audio, video, lighting, and control products and systems company. Our brands comprise AKG Acoustics®, AMX®, BSS Audio®, Crown International®, dbx Professional®, DigiTech®, JBL Professional®, Lexicon Pro®, Martin®, Soundcraft® and Studer®. These best-in-class products are designed, manufactured and delivered to a variety of customers in markets including tour, cinema and retail as well as corporate, government, education, large venue and hospitality. For scalable, high-impact communication and entertainment systems, HARMAN Professional Solutions is your single point of contact. [www.harmanpro.com](http://www.harmanpro.com)